



Shenzhen-Hong Kong Innovation Integrated Service Centre

Shenzhen, China

It is a pleasure to have RSHP involved in the design of the Service Centre, a new landmark tower and public podium, which will generate a hive of activity and form a vibrant heart in this upcoming neighbourhood. We're excited to be part of the journey to deliver a high-quality office building with integrated public amenities for our future tenants and local community to enjoy

SH-STC Development Co.

Location
Shenzhen, China

Date
2020 -

Client
SH-STIC, Shenzhen-Hongkong Science and Technology Innovation Cooperation Zone Development CO., LTD

Construction Cost
£120m

Height
212m / 695ft

Floors
45

Site Area
11,118 m²

Gross Floor Area
96,223m²

Local Design Institute
CCDI Group

General contractor
China Railway Construction Engineering Group (CRCEG)

Structural Engineer
CCDI Group

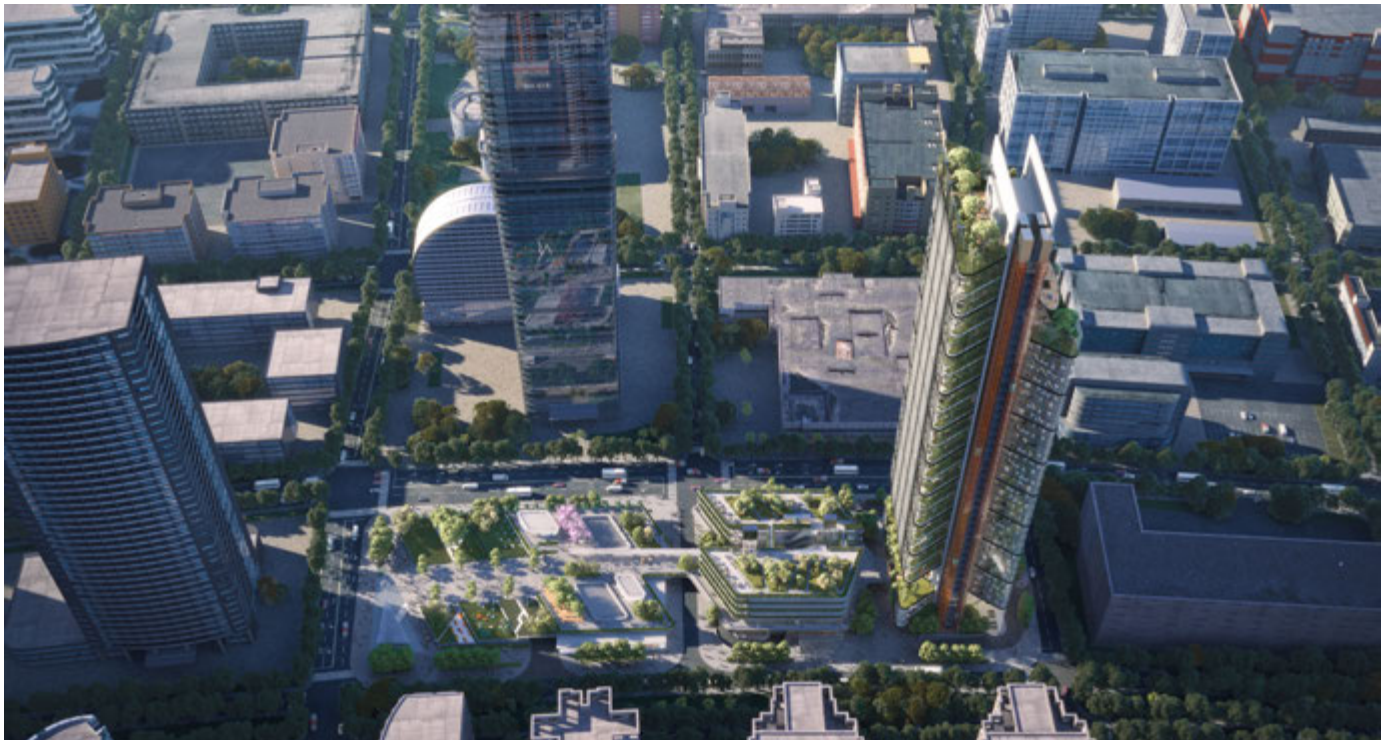
MEP
CCDI Group

Facade Consultant
CCDI Group

Landscape Consultant
CCDI Group

Lighting Consultant
PUDI

Sustainability
China's 3-star sustainability certification, equivalent to LEED Gold



Located at the heart of the Futian Free Trade Zone, south of the Shenzhen Central Business District, the Shenzhen-Hong Kong Innovation Integrated Service Centre is a 45-storey, naturally ventilated tower with an integrated multi-level podium. The scheme will provide a vibrant shopping, leisure and workplace destination set within a cultural-led public realm podium, which will connect to the existing metro station below and street level piazza.

With an area of 96,223m² and measuring 212m to the top of its central core, the tower's plan adopts a butterfly layout with curved bays of east and west office wings. The lower levels contain a health centre, which is unusual in a commercial tower, and public offices for state-owned companies. Mid to higher levels will provide commercial office space and a collection of green external terraces for occupants. The 13,640m² podium is a retail and cultural building of 6 levels

that integrates into the tower's south side with over 50% of its roof dedicated to green public space. The podium will provide public sports facilities, a library, retail, and a double height arts exhibition space. The tower's entrance lobby is also positioned within the podium at street level. This double height glazed area is supported by slim columns, permitted by the mega triangular trusses above on the podium roof, transferring the load of the tower's east wing to the building's central core. The basement area is a sunken plaza with retail, integrating the concourse of the existing Futian Bonded Zone station.

The tower embraces the opportunities of the building's location, capturing wonderful panoramic vistas of Shenzhen Bay and the mangrove areas. External panoramic glazed lifts - an architectural feature not usually seen in the area - capitalise on the views and animate the building's north and south facades.